

A [SECOND] HOME FOR HABITAT

*A Leadership Brevard Community Action Project
Benefiting Habitat for Humanity*

Diana Adams, Daniel Bowen, Shaun Hartman,
Clinton Hatcher, Angela Neal, Shona Price,
David Ryan, Ben Shupp, Patricia Weeks

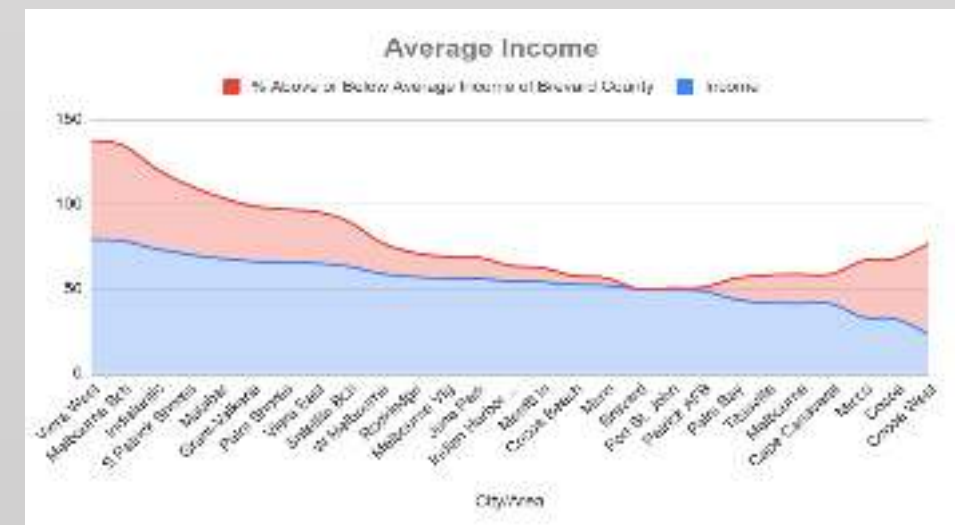
Project Scope



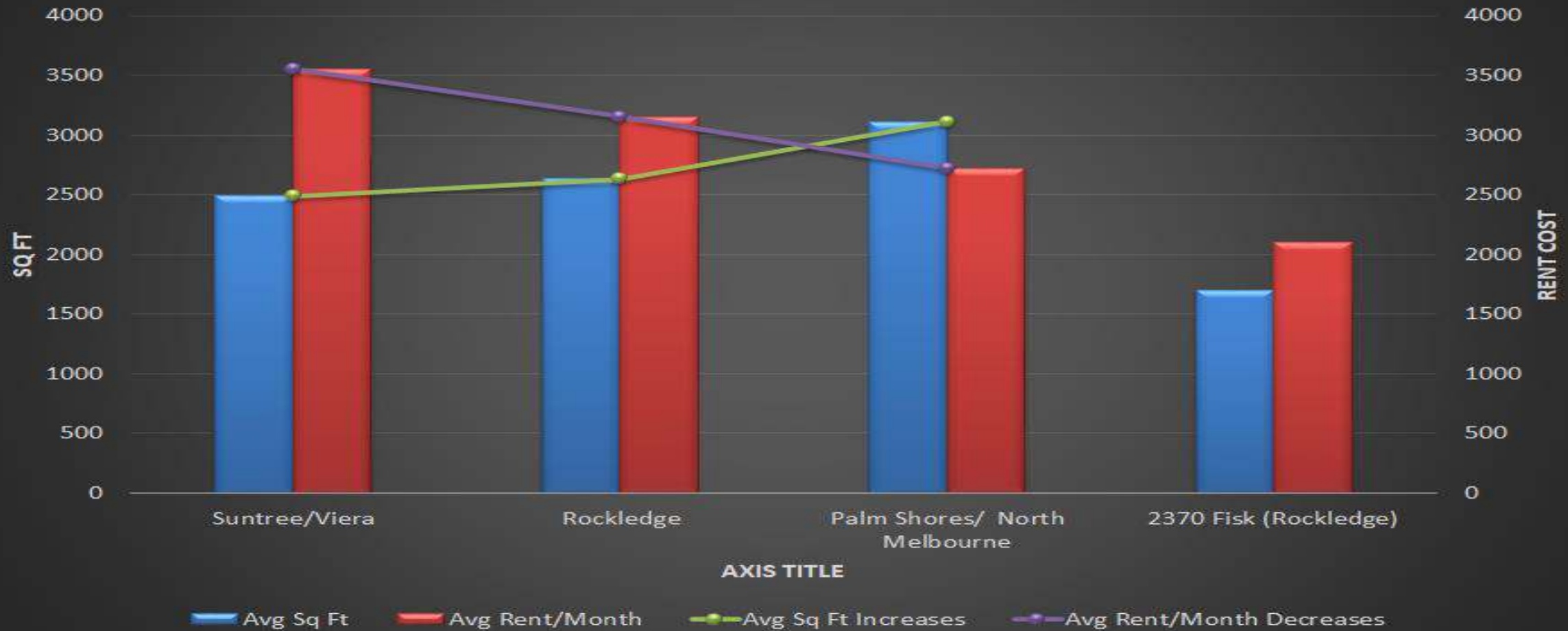
1. Analyze data to determine the best location in Brevard for a HFH drop-off
2. Identify the costs of manned vs unmanned models
3. Gather strategies from other nonprofits that could be implemented at the location

Project Info

- Demographic Data
- While beachside numbers were supported by data, HFH's desire to be in Central Brevard supports the following areas for location consideration in descending order
 - Viera West
 - Viera East
 - Palm Shores
- Organizational Recommendations



H4H Financial Breakdown



	Avg Sq Ft	Avg Rent/Month	Avg Sq Ft Increases	Avg Rent/Month Decreases
Suntree/Viera	2489.25	\$3,553.25	2489.25	\$3,553.25
Rockledge	2633	\$3,151.50	2633	\$3,151.50
Palm Shores/ North Melbourne	3113	\$2,723.00	3113	\$2,723.00
2370 Fisk (Rockledge)	1700	\$2,100.00		

H4H Sq Ft Correlations



	Avg Projected Profit Per Sq Ft	Avg Price Per Sq Ft	Avg Price Per Sq Ft Monthly
Suntree Viera	-\$0.71	\$18.96	\$18.96
Rockledge	-\$0.31	\$14.24	\$14.24
Palm Shores/ North Melbourne	-\$1.24	\$11.34	\$11.34
2370 Fiske (Rockledge)	\$0.07	\$9.71	\$9.71

Potential Locations



Address	City	Sq Ft	Cost/Month	Currently Available
2370 S Fiske Blvd	Rockledge	1700	\$2100	No
634 Barnes Blvd	Rockledge	2920	\$4257.66	Yes
4301 N Wickham Rd	Melbourne	2200	\$4125	Yes

** Commercial rental space has been challenging to find in the current market. Listings have been selling/being rented quickly after being posted so an active regular search of listings meeting Habitat's requirements may be needed to find the best available space*

Powering the Project

Difficulties

- Accessibility to data & having data for various parts of Brevard
- Finding similarly-structured nonprofits in Brevard
 - Solution: reaching out to nonprofits outside of the county

Strengths

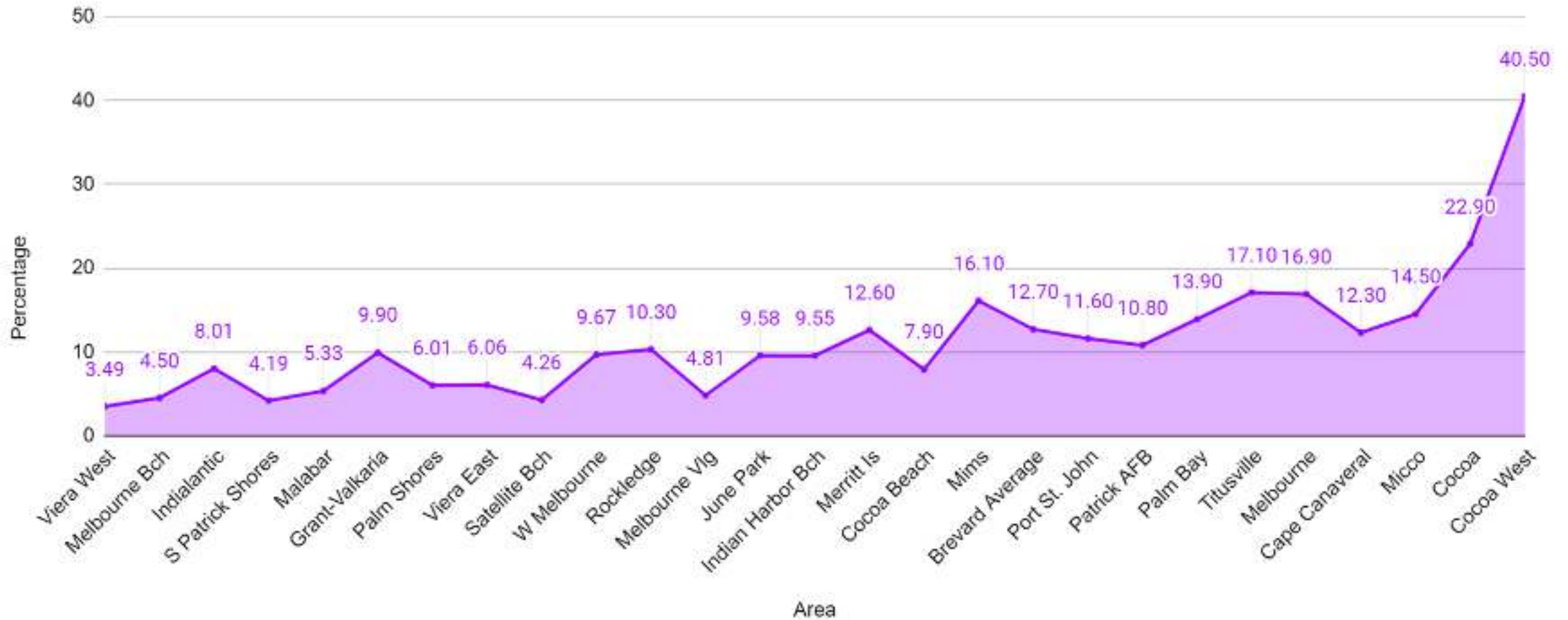
- ❖ HFH's positive reputation in Brevard
- ❖ An amazing team of talented and dedicated people who love HFH and want to see it succeed
- ❖ Knowledge of and connections within the county

Thank You!

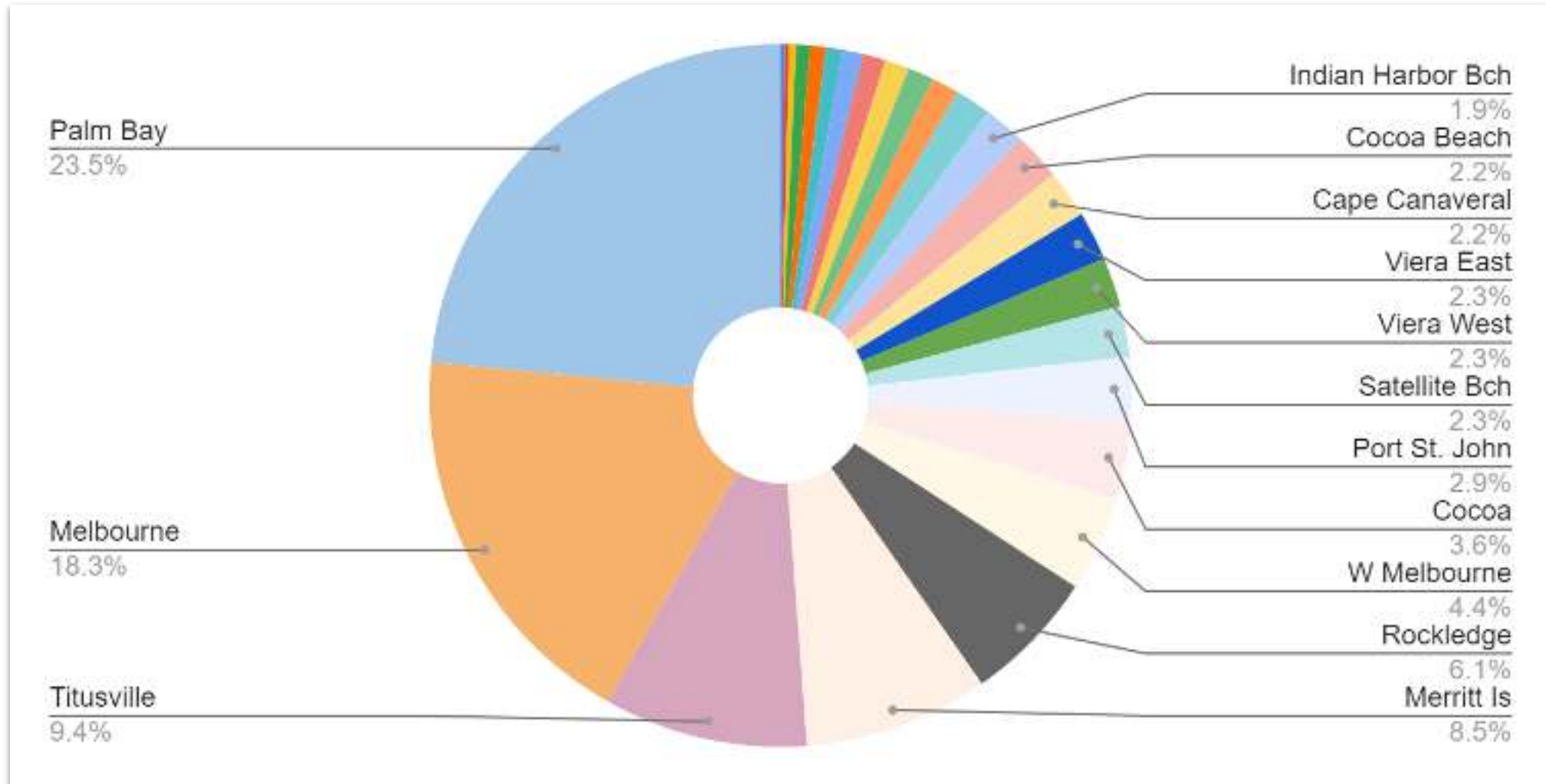
Addendum

Additional research/information that wouldn't fit within the presentation timing restrictions

Poverty Rates in Brevard County



Employees in Brevard County



QUESTIONS ASKED OF OTHER NON-PROFITS

- What types of drop-off facilities does your organization operate?
- Do you have satellite locations?
- What are the approximate sizes of your facilities?
- What is your manning model for your facilities?
- What is your standard operating hours for your facilities?
- What have you observed for donation cycles or seasonality?
- Have you used unmanned drop-off sites?
- Have you observed better/more donations in one location vs. another?
- Do you have any lessons from your facilities' operations?